

Worklist: 3767

<u>LAB CASE</u>	<u>ITEM</u>	<u>ITEM TYPE</u>	<u>DESCRIPTION</u>	
M2019-4380	1	BCK	AM 25/AM 26 Blood MultiDrug/THC Screen by LC-QQQ	
M2019-4452	2	BCK	AM 25/AM 26 Blood MultiDrug/THC Screen by LC-QQQ	
M2019-4464	1	BCK	AM 25/AM 26 Blood MultiDrug/THC Screen by LC-QQQ	
M2019-4565	2	BCK	AM 25/AM 26 Blood MultiDrug/THC Screen by LC-QQQ	
M2019-4621	2	BCK	AM 25/AM 26 Blood MultiDrug/THC Screen by LC-QQQ	
M2019-4654	2	BCK	AM 25/AM 26 Blood MultiDrug/THC Screen by LC-QQQ	
P2019-3113	1	BCK	AM 25/AM 26 Blood MultiDrug/THC Screen by LC-QQQ	
P2019-3126	1	BCK	AM 25/AM 26 Blood MultiDrug/THC Screen by LC-QQQ	
P2019-3137	1	BCK	AM 25/AM 26 Blood MultiDrug/THC Screen by LC-QQQ	
P2019-3138	1	BCK	AM 25/AM 26 Blood MultiDrug/THC Screen by LC-QQQ	
P2019-3143	1	BCK	AM 25/AM 26 Blood MultiDrug/THC Screen by LC-QQQ	
P2019-3180	1	BCK	AM 25/AM 26 Blood MultiDrug/THC Screen by LC-QQQ	
P2019-3186	1	BCK	AM 25/AM 26 Blood MultiDrug/THC Screen by LC-QQQ	
P2019-3187	1	BCK	AM 25/AM 26 Blood MultiDrug/THC Screen by LC-QQQ	
P2019-3188	1	BCK	AM 25/AM 26 Blood MultiDrug/THC Screen by LC-QQQ	
P2019-3195	1	BCK	AM 25/AM 26 Blood MultiDrug/THC Screen by LC-QQQ	
P2019-3203	1	BCK	AM 25/AM 26 Blood MultiDrug/THC Screen by LC-QQQ	
P2019-3208	1	BCK	AM 25/AM 26 Blood MultiDrug/THC Screen by LC-QQQ	

AM# 25: Multi-Drug Screen in Blood by LC-MS/MS

Extraction Date: 10/22/19
 Plate lot#: 0543908

Analyst: Sarah Pickle
 Plate Expiration: 11/28/19

Mobile phase A: 10mM Amm Form
 0.5M Ammonium Hydroxide

Mobile phase B: 0.1% Formic Acid in MeOH
 Ethyl Acetate LC Methanol

Blank Blood Lot: 445283-3
LCMS-QQQ ID: 069901

Column: Phenomenex Phenyl Hexyl (4.6x50mm, 2.6um)

Pre-Analytic:

- 1. Check levels of mobile phases and needle wash refill as needed. Ensure waste is not full.
- 2. Ensure correct column is installed and begin mobile phase flow allow to equilibrate ~ 30 minutes.

Analytic:

- 1. Remove standards, plate, controls, and samples from cold storage. Allow to reach room temperature.
- 2. Pipette **250 µL blood (calibrated pipette)** in wells of analytical (standards) plate. **Pipette ID: #3**
- 3. Place on shaking incubator at ambient temp., 900 rpm for 15 minutes. *Shaker ID: 067105*
- 4. Pipette **250 µL of 0.5 M ammonium hydroxide** in wells of analytical plate.
- 5. Place on shaking incubator at ambient temp., 900 rpm for 15 minutes.
- 6. Transfer **300 µL of blood+base** mixture to corresponding wells of SLE+ plate.
- 7. Apply positive pressure for approx. 10-15 seconds (or until no liquid remains on top of sorbent).
(Load at 85-100 PSI- Selector to the right) Manifold ID: 067104
- 8. Wait 5 minutes.
- 9. Add **900 µL ethyl acetate.**
- 10. Wait 5 minutes.
- 11. Apply positive pressure for approx. 10-15 seconds. *(12-15 PSI- Selector to the left).*
- 12. Add **900 µL ethyl acetate.**
- 13. Wait 5 minutes.
- 14. Apply positive pressure for approx. 10-15 seconds. *(12-15 PSI- Selector to the left).*
- 15. Remove plate containing eluate. Place on SPE Dry and evaporate to dryness at approx. 35°C.
SPE Dry ID: 067103
- 16. Reconstitute in **100 µL 100% LC MeOH** and heat seal plate with foil. Place in autosampler and run worklist.

Post-Analytic

- 1. Open quantitation software and create a new quantitation batch.
 Batch Name: MDS Worklist path: D:\MassHunter\Data\2019\AM 25-26\102219 AM 25 26 SP
- 2. Make necessary changes to integration limits
- 3. Evaluate samples, S/N of primary transition >5 and S/N of secondary transition >3 or evaluation of peak symmetry and resolution. Within +/- 2% or 0.1 min RT of administrative control. Calculated concentration 5 or greater or 2-5 for discretionary range.
- 4. Did all QCs pass for each analyte? Y / N _____
- 5. Central File Packet to include: LIMS Worklist, Method Checklist, Calibration and Control Reports

COMMENTS:



Idaho State Police Forensic Services

5

AM #25 Blood Multi-Drug Screen by LCMS-QQQ

Methanol External Control Solution (Lot: 042719)

100 ul of 1mg/mL stock was added to each drug to 9600 ul of LC MeOH.

<i>Component</i>	<i>Source</i>	<i>Source Lot Number</i>	<i>Expiration Date</i>
Methanol (LCMS)	Fisher	184782	
Morphine	Cerilliant	FE08141515	November 2020
Metoprolol	Cerilliant	FN06091510	July 2020
Flunitrazepam	Cerilliant	FE08051602	August 2021
Trazodone	Cerilliant	FN12151403	January 2020
Prepared:	04/27/19		
Prepared By:	Tamara Salazar		
Expires:	01/31/2020		

Blood External Control Solution (Lot: WS042719)

100 ul of methanol external control solution was added to 9900 ul of blood.

Approximately 50ng/mL of each compound.

<i>Component</i>	<i>Source</i>	<i>Source Lot Number</i>
Negative Blood	Hemostat	445283-1
Methanol External Control Solution		042719
Prepared:	04/27/19	
Prepared by:	Tamara Salazar	
Expires:	01/31/2020	

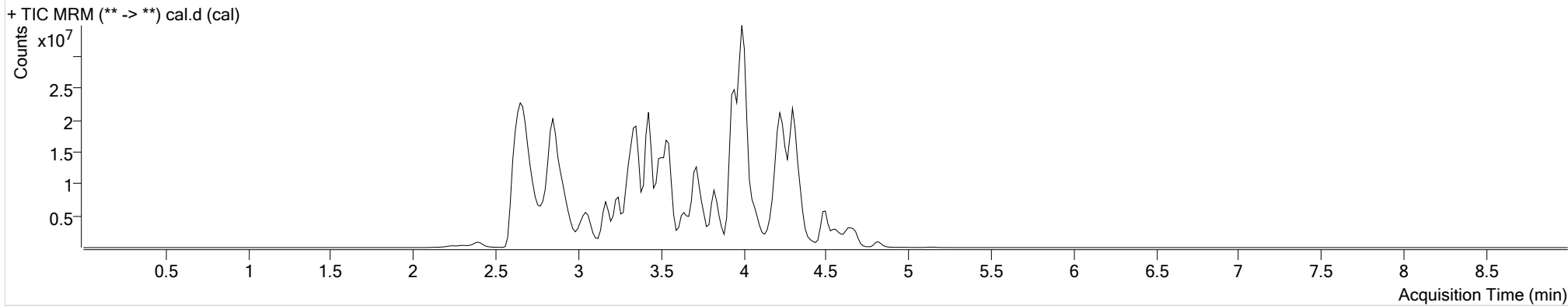
AM #25 Multi-Drug Screen Results



Batch results D:\MassHunter\Data\2019\AM 25-26\102219 AM 25 26 SP\QuantResults\MDS.batch.bin
Calibration Last Update 10/23/2019 9:06:30 AM

Instrument Falco **Data File** cal.d
Type Cal **Sample** cal
Acq. Method am 25 all.m **Operator**
Sample Position P1-G12 **Comment**
Injection Volume 5
Acq. Date-Time 10/22/2019 12:04:36 PM
Sample Info.

Sample Chromatogram



Name	RT	Resp.	S/N	S/N	ISTD Resp.	Calc. Conc.
6-MAM	2.829	24090	27620.84	1144.05	524454	10.0000
7-aminoclonazepam	3.551	206662	1069.52	55.09	966158	10.0000
7-aminoflunitrazepam	3.765	1467283	133921.72	220203.29	7514235	10.0000
Acetyl Fentanyl	3.731	129644	200.99	200.61	12258268	10.0000
Acetyl Norfentanyl	2.838	154467	663.39	140.55	6242851	10.0000
a-hydroxyalprazolam	4.484	34617	30.83	44.83	250097	10.0000
alpha-hydroxymidazolam	4.559	600192	424.92	2181.43	4458481	10.0000
alpha-PVP	3.451	4146570	7455.85	3474.35	17384907	10.0000
Alprazolam	4.594	841608	204.54	415.74	2131135	10.0000
Amitriptyline	4.353	2784277	∞	166.90	6520079	10.0000
Amphetamine	2.827	1912149	∞	∞	3571338	10.0000
Benzoyllecgonine	3.351	485327	186.19	110.59	2289785	10.0000
Buprenorphine	4.157	413766	432.23	534.59	2086972	10.0000
Bupropion	3.649	3169488	790.83	2308.67	9560462	10.0000
Carbamazepine	4.218	2355302	590.95	∞	16052758	10.0000
Carisoprodol	4.185	217372	332.69	44.21	1561631	10.0000
Chlordiazepoxide	4.687	146453	15.87	∞	4824296	10.0000
Chlorpheniramine	3.874	18280	8.07	15665.37	34222587	10.0000

AM #25 Multi-Drug Screen Results



Name	RT	Resp.	S/N	S/N	ISTD Resp.	Calc. Conc.
Citalopram	4.008	1583868	9776.84	32182.46	7313276	10.0000
Clonazepam	4.439	103435	115.84	362.59	203287	10.0000
Cocaine	3.488	4218111	19780.97	1035.39	19332272	10.0000
Codeine	2.727	274554	1942.51	∞	1187172	10.0000
Cyclobenzaprine	4.276	2196784	335.84	∞	6290926	10.0000
Desipramine	4.308	2348810	4781.68	146.78	15577946	10.0000
Dextromethorphan	3.998	1171471	56804.01	2909.18	5660815	10.0000
Dextrorphan	3.324	2128680	2438.24	352.19	14463155	10.0000
Diazepam	4.826	352262	2614.47	395.82	1850046	10.0000
Dihydrocodeine	2.680	703337	448.63	76.04	3442652	10.0000
Diphenhydramine	3.953	5122925	668051.09	381.92	34222587	10.0000
Doxepin	4.075	1620421	∞	4.22 Low	11444036	10.0000
Doxylamine	3.553	8492390	3100198.40	228809.66	30424032	10.0000
EDDP	3.997	2743217	463.45	576.19	18653410	10.0000
Estazolam	4.503	1369378	1582.12	348.42	4260083	10.0000
Etizolam	4.604	183494	366.81	794.46	4260083	10.0000
Fentanyl	3.945	157705	103.60	94894.42	8375979	10.0000
Flunitrazepam	4.547	467330	401.01	91457.25	99363	10.0000
Fluoxetine	4.271	1892423	3534.80	580.74	7506284	10.0000
Flurazepam	4.051	1853046	∞	425.33	99363	10.0000
Hydrocodone	2.925	859946	∞	31.42	5034295	10.0000
Hydromorphone	2.412	627704	1991.68	∞	2353662	10.0000
Imipramine	4.305	3050375	∞	∞	11475493	10.0000
Ketamine	3.311	2767752	∞	227.87	13638889	10.0000
Lamotrigine	3.478	203804	114.69	14532.22	11075168	10.0000
Levamisole	2.870	2845330	∞	449.42	19332272	10.0000
Lorazepam	4.408	15382	32.33	11.93	203287	10.0000
Maprotiline	4.353	2807628	47.42	347.74	6520079	10.0000
MDA	2.962	828352	337.50	323.26	3783271	10.0000
MDEA	3.175	3420375	6524.77	1930.36	15967101	10.0000
MDMA	3.038	3823654	729.85	∞	2621639	10.0000
Meperidine	3.509	2157367	228.34	2252.29	11075168	10.0000
Meprobamate	3.636	63669	99.78	103.32	266433	10.0000
Methadone	4.318	4452922	394053.60	515.41	18681520	10.0000
Methamphetamine	2.933	3383086	∞	∞	15475906	10.0000
Methocarbamol	3.541	125283	24.76	234.33	11075168	10.0000
Methylphenidate	3.435	7581804	676.35	14.21	33583622	10.0000
Metoprolol	3.369	508646	566.44	4313.82	11075168	10.0000
Midazolam	4.651	361423	∞	212504.12	3781439	10.0000
Mirtazapine	3.676	2477595	8336.60	∞	11075168	10.0000
Mitragynine	4.081	366374	427008.37	458179.44	11444036	10.0000
Morphine	2.232	147126	1096.27	3051.51	80178	10.0000
Norbuprenorphine	3.774	15456	93.36	9025.35	74058	10.0000
Nordiazepam	4.676	103739	244.98	47.92	300311	10.0000

AM #25 Multi-Drug Screen Results



Name	RT	Resp.	S/N	S/N	ISTD Resp.	Calc. Conc.
Norfentanyl	3.250	3871240	655.48	1147.86	16428636	10.0000
Norhydrocodone	2.881	28884	75.69	564.23	638545	10.0000
Normeperidine	3.527	1180943	536.41	173.17	3919859	10.0000
Noroxycodone	2.848	458221	159.01	455.08	1373532	10.0000
Nortriptyline	4.355	1340325	194606.73	∞	2856060	10.0000
O-desmethyl-tramadol	2.852	7458951	3022.89	332.10	34601238	10.0000
Olanzapine	3.686	751490	∞	618.30	75338	10.0000
Oxazepam	4.489	59373	16.29	13.08	411326	10.0000
Oxycodone	2.846	1553141	∞	149.06	6316614	10.0000
Oxymorphone	2.303	337543	∞	64.26	1060983	10.0000
Paroxetine	4.283	149902	23.10	334.31	7753491	10.0000
Phenazepam	4.619	131912	758.17	∞	723840	10.0000
Phencyclidine	3.847	3845099	1589.35	854.58	17909688	10.0000
Phentermine	3.085	814697	224.49	8.79	10450697	10.0000
Phenytoin	4.109	13938	21.53	19.60	75338	10.0000
Promethazine	4.243	6043893	14936.59	314.06	25744033	10.0000
Pseudoephedrine	2.658	34389375	∞	∞	135417349	10.0000
Quetiapine	4.236	2509821	670240.81	218.85	3731022	10.0000
Sertraline	4.487	1553404	377.78	299.17	7753491	10.0000
Sufentanil	4.220	159467	3840.97	399.45	11842658	10.0000
Tapentadol	3.374	3321127	3489.44	1566.63	16029391	10.0000
Temazepam	4.641	435841	285.53	42.83	2531617	10.0000
Tramadol	3.354	7109327	∞	225.60	31443191	10.0000
Trazodone	4.205	2453111	31263.59	∞	12482491	10.0000
Venlafaxine	3.720	4117296	16433.65	354.51	22776443	10.0000
Zaleplon	4.334	502500	962.86	1451.79	994891	10.0000
Zolpidem	3.948	5458494	∞	122305.86	28374113	10.0000
Zopiclone	3.806	205553	2215.28	1326.86	898940	10.0000

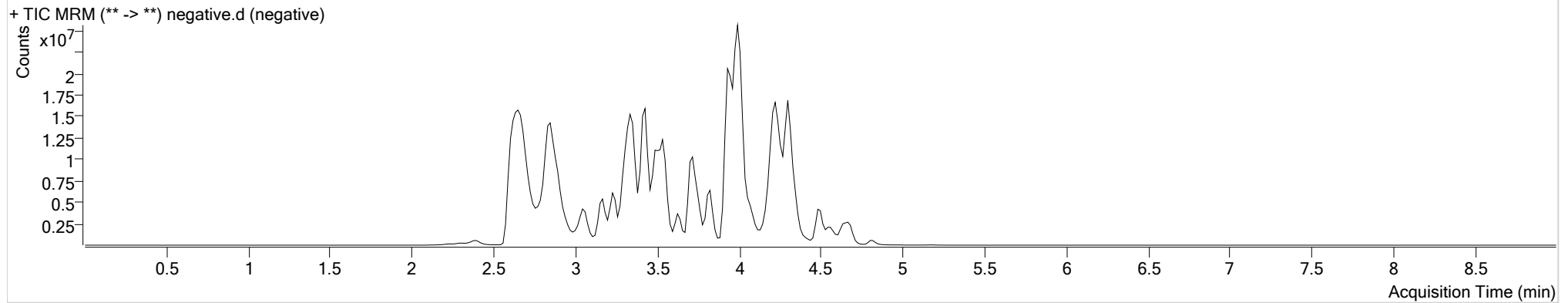
AM #25 Multi-Drug Screen Results



Batch results D:\MassHunter\Data\2019\AM 25-26\102219 AM 25 26 SP\QuantResults\MDS.batch.bin
Calibration Last Update 10/23/2019 9:06:30 AM

Instrument	Falco	Data File	negative.d
Type	Sample	Sample	negative
Acq. Method	am 25 all.m	Operator	
Sample Position	P1-A4	Comment	
Injection Volume	5		
Acq. Date-Time	10/22/2019 12:14:17 PM		
Sample Info.			

Sample Chromatogram



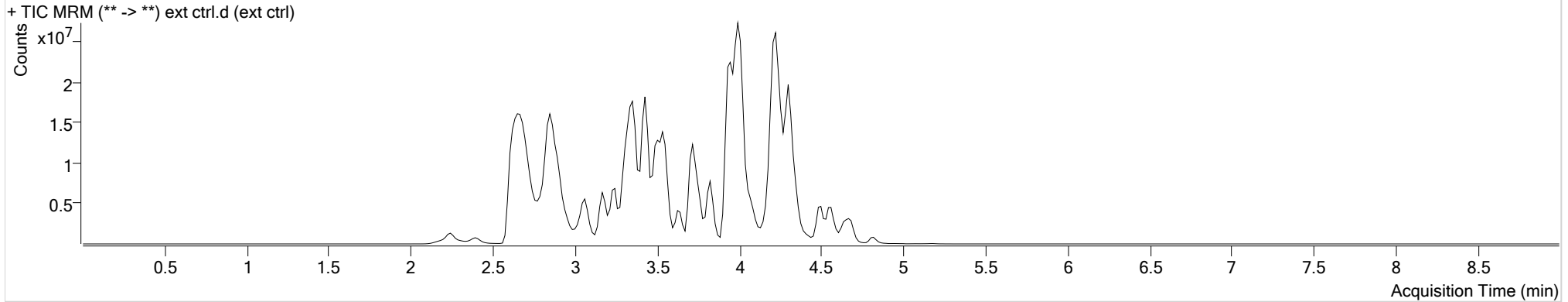
AM #25 Multi-Drug Screen Results



Batch results D:\MassHunter\Data\2019\AM 25-26\102219 AM 25 26 SP\QuantResults\MDS.batch.bin
Calibration Last Update 10/23/2019 9:06:30 AM

Instrument	Falco	Data File	ext ctrl.d
Type	Sample	Sample	ext ctrl
Acq. Method	am 25 all.m	Operator	
Sample Position	P1-B4	Comment	
Injection Volume	5		
Acq. Date-Time	10/22/2019 12:23:49 PM		
Sample Info.			

Sample Chromatogram



Name	RT	Resp.	S/N	S/N	ISTD Resp.	Calc. Conc.
Flunitrazepam	4.547	4559571	5319.76	304097.54	112753	85.9798
Metoprolol	3.369	4007585	1890.82	2671933.56	12798969	68.1778
Morphine	2.247	1816373	12138.20	∞	109079	90.7456
Trazodone	4.205	21246616	12780234.66	∞	13438854	80.4473

AM# 26: THC and Metabolites Screen in Blood by LC-MS/MS

Extraction Date: 10/22//19Analyst: Sarah Pickle

Plate lot#: Lot # 190716 Item# IDP-108

Plate Expiration: 1/16/20

Mobile phase A: 10mM Ammonium Formate
0.1% Formic Acid in Water

Mobile phase B: 0.1% Formic acid in MeOH
MTBE Hexane

Blank Blood Lot: 445283-3

Column: Phenomenex Phenyl Hexyl (4.6x50mm: 2.6 um)

LCMS-QQQ ID: 069901

Pre-Analytic:

- 1. Check levels of mobile phases and needle wash refill as needed. Ensure waste is not full.
- 2. Ensure correct column is installed and begin mobile phase flow allow to equilibrate ~ 30 minutes.

Analytic:

- 1. Remove standards, plate, controls, and samples from cold storage. Allow to reach room temperature.
- 2. Pipette **1000 µL blood (calibrated pipette)** in wells of analytical (standards) plate. **Pipette ID: #27**
- 3. Place on shaking incubator at ambient temp., 900 rpm for 15 minutes. *Shaker ID: 067105*
- 4. Pipette **500 µL 0.1% formic acid** in wells of analytical plate.
- 5. Place on shaking incubator at ambient temp., 900 rpm for 15 minutes.
- 6. Transfer **800 µL of blood+base** mixture to corresponding wells of SLE+ plate.
- 7. Apply positive pressure for approx. 10-15 seconds (or until no liquid remains on top of sorbent).
(Load at 85-100 PSI- Selector to the right) Manifold ID: 067104
- 8. Wait 5 minutes.
- 9. Add **2.25 mL MTBE** (add in 3 increments of 750 µL).
- 10. Wait 5 minutes.
- 11. Apply positive pressure for approx. 10-15 seconds. **(12-15 PSI- Selector to the left).**
- 12. Add **2.25 mL hexane** (add in 3 increments of 750 µL).
- 13. Wait 5 minutes.
- 14. Apply positive pressure for approx. 10-15 seconds. **(12-15 PSI- Selector to the left).**
- 15. Remove plate containing eluate. Place on SPE Dry and evaporate to dryness at approx. 35°C.
SPE Dry ID: 067103
- 16. Reconstitute in **100 µL 100% LCMS MeOH** and heat seal plate with foil. Place in autosampler and run worklist.

Post-Analytic

- 1. Create batch and process data.
Worklist path: D:\MassHunter\Data\2019\AM 25-26\102219 AM 25 26 SP Batch Name: THCS
- 2. Calculated sample concentration of 3 ng/mL or greater for THC and THC-OH, a calculated sample concentration of 10 ng/mL or greater for Carboxy-THC.
- 3. Retention time within +/- 2% or +/-0.100 min whichever is greater of the average retention time of the calibrators.
- 4. Did all QCs pass for each analyte? Y / N
- 5. Central File Packet to include: LIMS Worklist, Method Checklist, Calibration and Control Reports

COMMENTS:

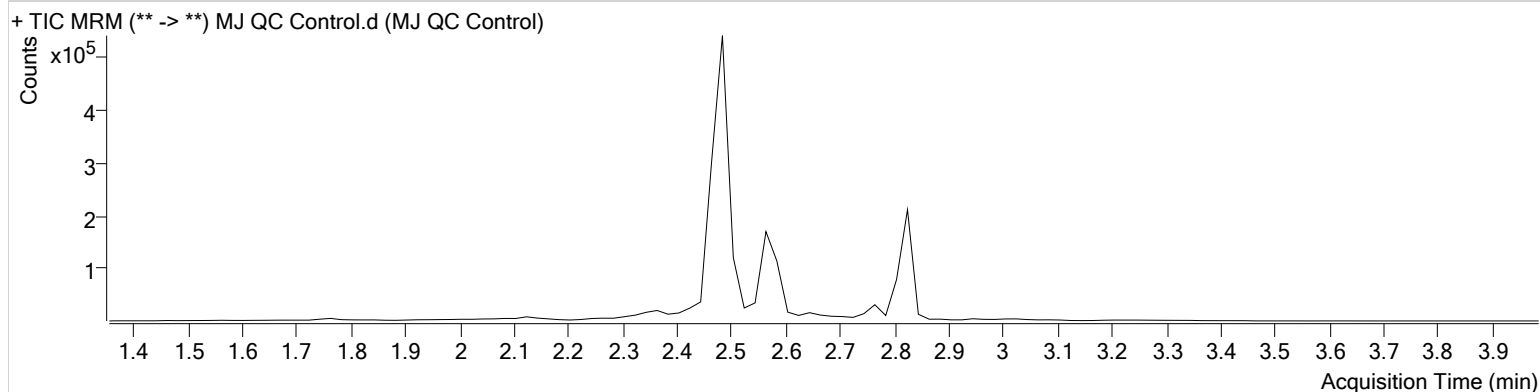
AM #26 Cannabinoids Screen Results

Batch results D:\MassHunter\Data\2019\AM 25-26\102219 AM 25 26 SP\QuantResults\THCS.batch.bin
Calibration Last Update 10/23/2019 8:24:09 AM

Instrument	69679	Data File	MJ QC Control.d
Type	Sample	Sample	MJ QC Control
Acq. Method	am 26 test.m	Operator	
Sample Position	P3-H1	Comment	
Injection Volume	10		
Acq. Date-Time	10/22/2019 4:38:17 PM		

Sample Info.

Sample Chromatogram



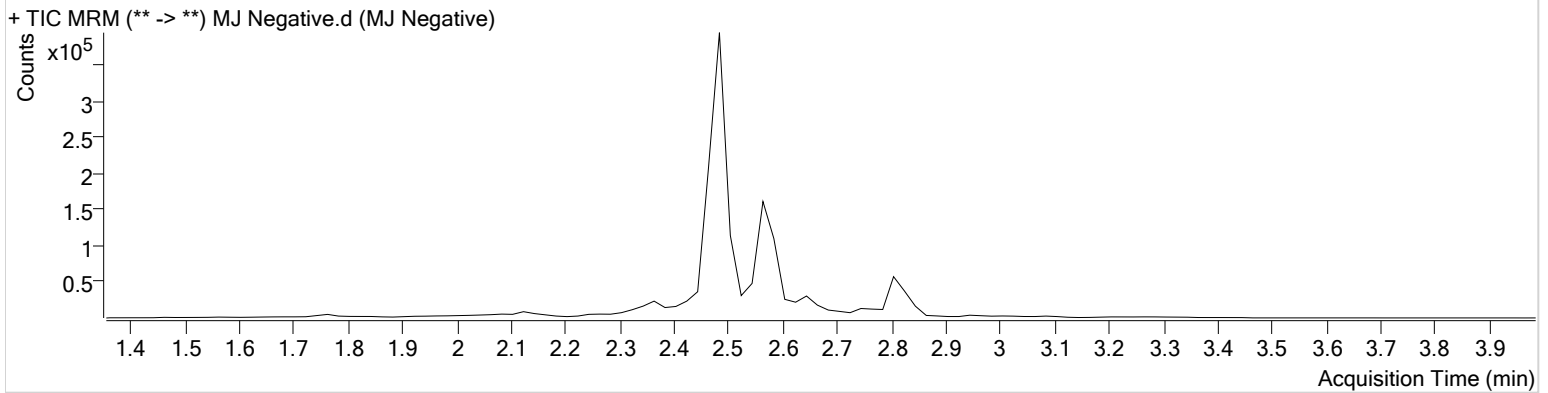
Name	RT	Resp.	ISTD Resp.	Final Conc.
THC	2.839	8589	337913	4.0344 ng/ml
THC-COOH	2.585	44969	232811	14.2598 ng/ml
THC-OH	2.491	62518	1077142	4.7413 ng/ml

AM #26 Cannabinoids Screen Results

Batch results D:\MassHunter\Data\2019\AM 25-26\102219 AM 25 26 SP\QuantResults\THCS.batch.bin
Calibration Last Update 10/23/2019 8:24:09 AM

Instrument	69679	Data File	MJ Negative.d
Type	Sample	Sample	MJ Negative
Acq. Method	am 26 test.m	Operator	
Sample Position	P3-A2	Comment	
Injection Volume	10		
Acq. Date-Time	10/22/2019 4:51:22 PM		
Sample Info.			

Sample Chromatogram



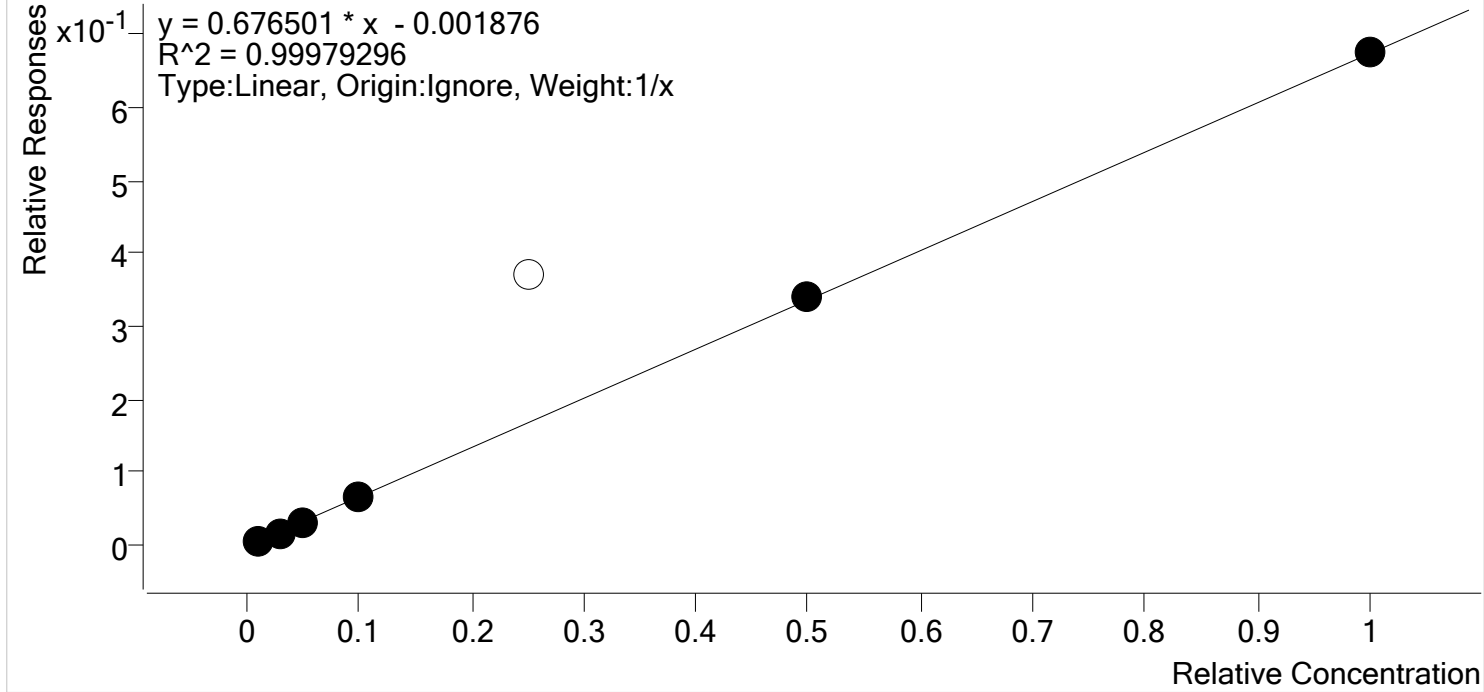
\$



AM #26 Cannabinoids Screen Calibration Curve Report

Batch results D:\MassHunter\Data\2019\AM 25-26\102219 AM 25 26 SP\QuantResults\THCS.batch.bin
Last Cal. Update 10/23/2019 8:24 AM
Analyst Name ISP\datastor
Analyte THC **Internal Standard** THC-d3

THC - 7 Levels, 6 Levels Used, 7 Points, 6 Points Used, 0 QCs



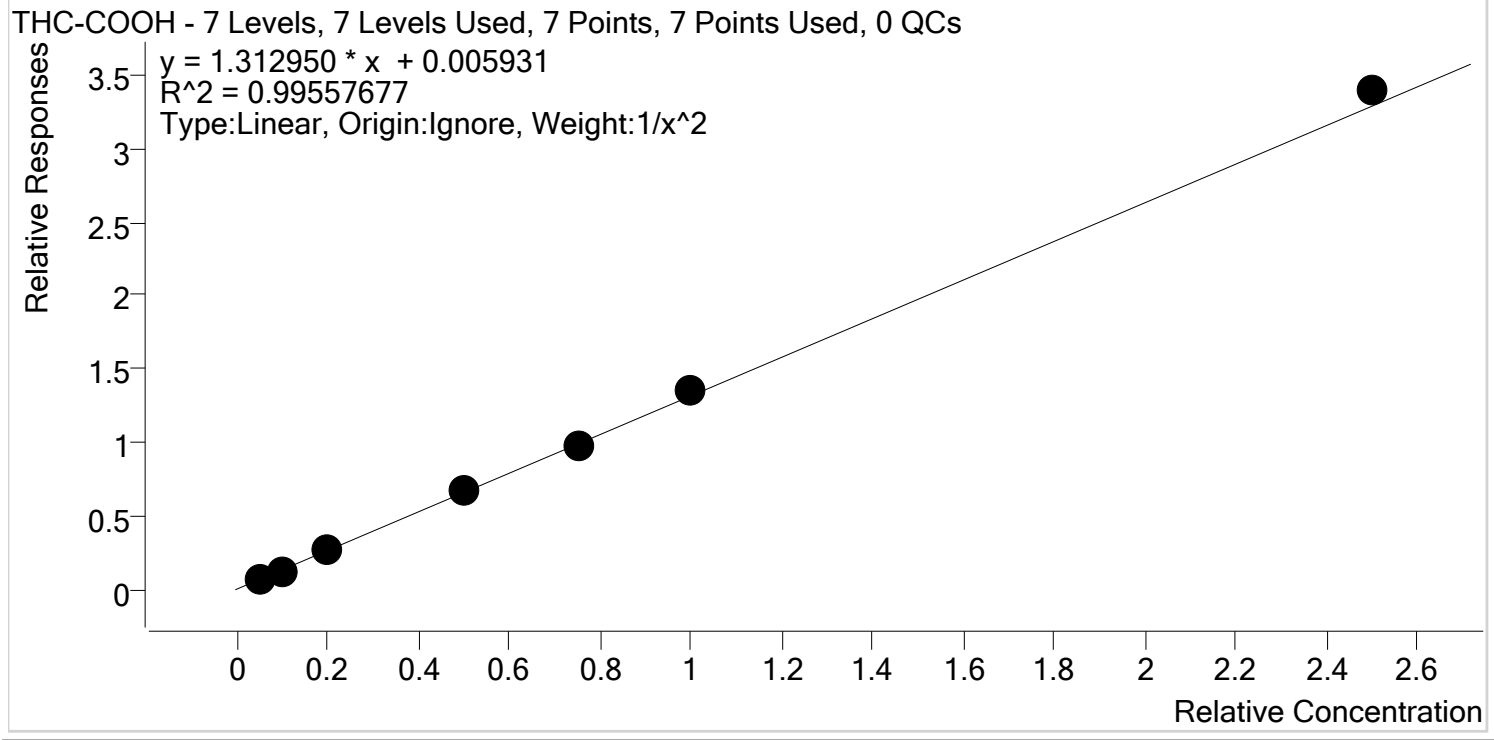
Sample	Level	Enabled	Expected Concentration	Final Concentration	Accuracy
MJ Cal 1	1	✓	1.0	1.1	109.8
MJ Cal 2	2	✓	3.0	2.8	94.9
MJ Cal 3	3	✓	5.0	4.9	97.3
MJ Cal 4	4	✓	10.0	9.7	97.3
MJ Cal 5	5	✗	25.0	55.5	222.0
MJ Cal 6	6	✓	50.0	50.3	100.6
MJ Cal 7	7	✓	100.0	100.2	100.2

\$



AM #26 Cannabinoids Screen Calibration Curve Report

Batch results D:\MassHunter\Data\2019\AM 25-26\102219 AM 25 26 SP\QuantResults\THCS.batch.bin
Last Cal. Update 10/23/2019 8:24 AM
Analyst Name ISP\datastor
Analyte THC-COOH **Internal Standard** THC-COOH-d9



Sample	Level	Enabled	Expected Concentration	Final Concentration	Accuracy
MJ Cal 1	1	✓	5.0	5.3	105.5
MJ Cal 2	2	✓	10.0	8.9	88.6
MJ Cal 3	3	✓	20.0	19.9	99.6
MJ Cal 4	4	✓	50.0	50.7	101.4
MJ Cal 5	5	✓	75.0	74.5	99.3
MJ Cal 6	6	✓	100.0	102.3	102.3
MJ Cal 7	7	✓	250.0	258.0	103.2

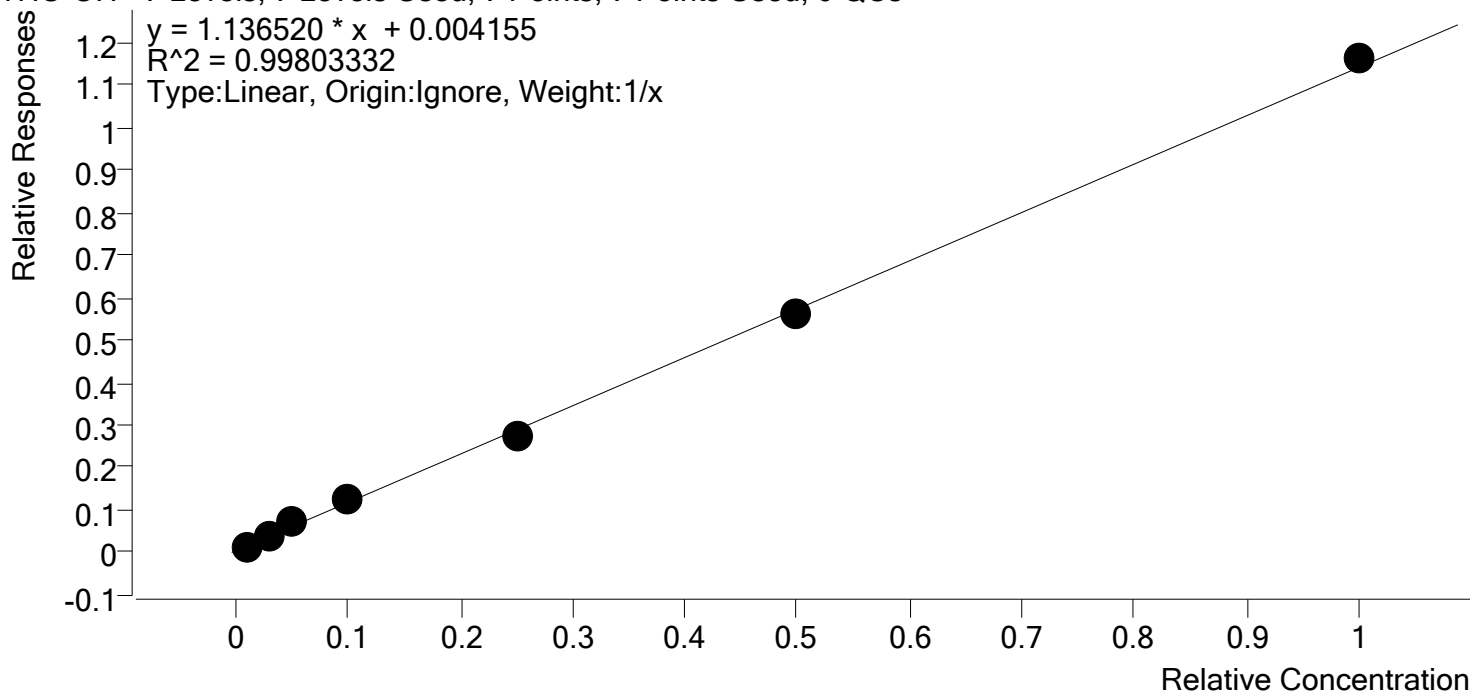
SD



AM #26 Cannabinoids Screen Calibration Curve Report

Batch results D:\MassHunter\Data\2019\AM 25-26\102219 AM 25 26 SP\QuantResults\THCS.batch.bin
Last Cal. Update 10/23/2019 8:24 AM
Analyst Name ISP\datastor
Analyte THC-OH **Internal Standard** THC-OH-d3

THC-OH - 7 Levels, 7 Levels Used, 7 Points, 7 Points Used, 0 QCs



Sample	Level	Enabled	Expected Concentration	Final Concentration	Accuracy
MJ Cal 1	1	✓	1.0	0.8	83.8
MJ Cal 2	2	✓	3.0	3.1	104.3
MJ Cal 3	3	✓	5.0	5.8	115.7
MJ Cal 4	4	✓	10.0	10.3	103.2
MJ Cal 5	5	✓	25.0	23.5	93.9
MJ Cal 6	6	✓	50.0	48.6	97.3
MJ Cal 7	7	✓	100.0	101.8	101.8

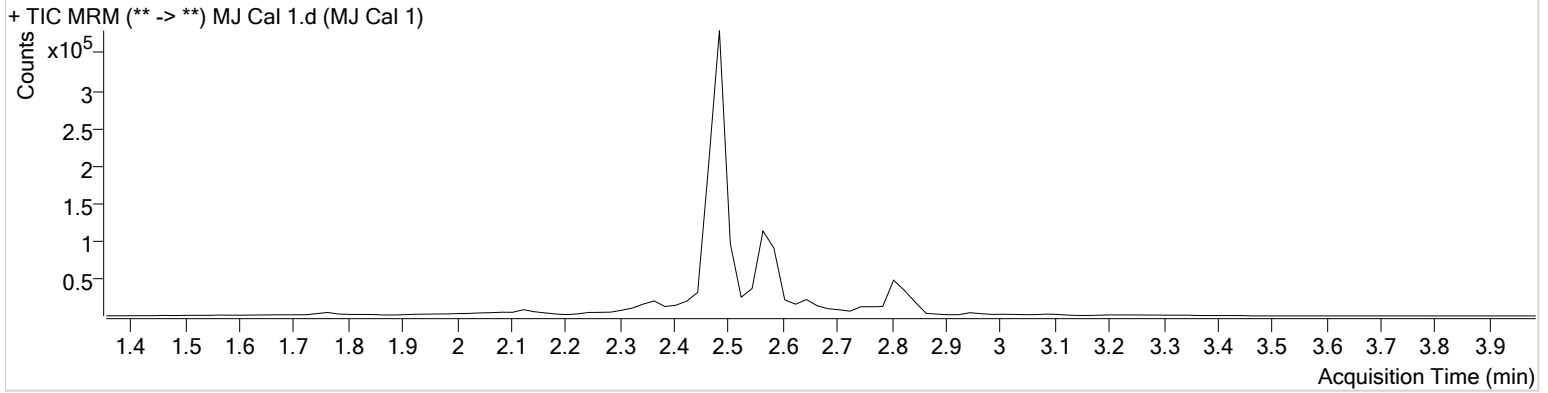
AM #26 Cannabinoids Screen Results

Batch results D:\MassHunter\Data\2019\AM 25-26\102219 AM 25 26 SP\QuantResults\THCS.batch.bin
Calibration Last Update 10/23/2019 8:24:09 AM

Instrument	69679	Data File	MJ Cal 1.d
Type	Cal	Sample	MJ Cal 1
Acq. Method	am 26 test.m	Operator	
Sample Position	P3-A1	Comment	
Injection Volume	10		
Acq. Date-Time	10/22/2019 3:52:19 PM		

Sample Info.

Sample Chromatogram



Name	RT	Resp.	ISTD Resp.	Final Conc.
THC	2.819	572	103003	1.0978 ng/ml Low
THC-COOH	2.585	13165	175060	5.2761 ng/ml
THC-OH	2.491	10892	796413	0.8378 ng/ml Low

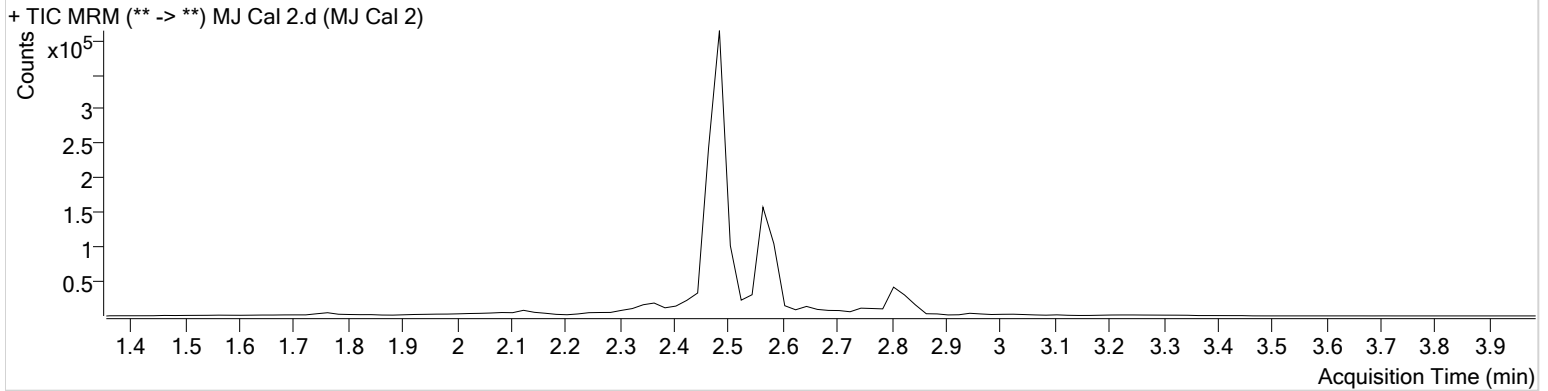
AM #26 Cannabinoids Screen Results

Batch results D:\MassHunter\Data\2019\AM 25-26\102219 AM 25 26 SP\QuantResults\THCS.batch.bin
Calibration Last Update 10/23/2019 8:24:09 AM

Instrument	69679	Data File	MJ Cal 2.d
Type	Cal	Sample	MJ Cal 2
Acq. Method	am 26 test.m	Operator	
Sample Position	P3-B1	Comment	
Injection Volume	10		
Acq. Date-Time	10/22/2019 3:59:02 PM		

Sample Info.

Sample Chromatogram



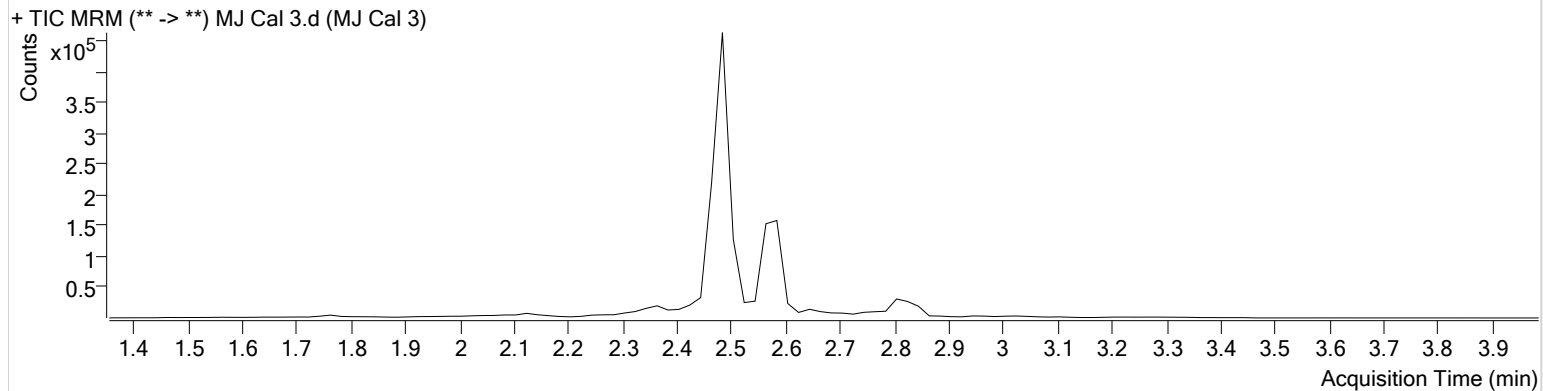
Name	RT	Resp.	ISTD Resp.	Final Conc.
THC	2.819	1545	88873	2.8465 ng/ml Low
THC-COOH	2.585	29063	237769	8.8581 ng/ml
THC-OH	2.491	34478	868246	3.1284 ng/ml

AM #26 Cannabinoids Screen Results

Batch results D:\MassHunter\Data\2019\AM 25-26\102219 AM 25 26 SP\QuantResults\THCS.batch.bin
Calibration Last Update 10/23/2019 8:24:09 AM

Instrument 69679 **Data File** MJ Cal 3.d
Type Cal **Sample** MJ Cal 3
Acq. Method am 26 test.m **Operator**
Sample Position P3-C1 **Comment**
Injection Volume 10
Acq. Date-Time 10/22/2019 4:05:36 PM
Sample Info.

Sample Chromatogram



Name	RT	Resp.	ISTD Resp.	Final Conc.
THC	2.819	2270	73148	4.8645 ng/ml
THC-COOH	2.585	60357	225548	19.9298 ng/ml
THC-OH	2.491	62933	900600	5.7830 ng/ml

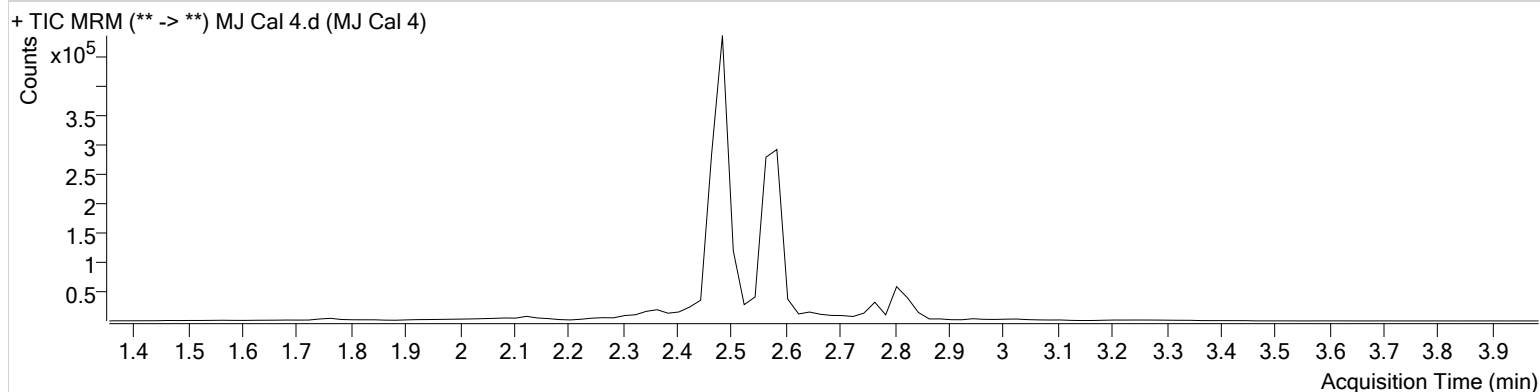
AM #26 Cannabinoids Screen Results

Batch results D:\MassHunter\Data\2019\AM 25-26\102219 AM 25 26 SP\QuantResults\THCS.batch.bin
Calibration Last Update 10/23/2019 8:24:09 AM

Instrument	69679	Data File	MJ Cal 4.d
Type	Cal	Sample	MJ Cal 4
Acq. Method	am 26 test.m	Operator	
Sample Position	P3-D1	Comment	
Injection Volume	10		
Acq. Date-Time	10/22/2019 4:12:08 PM		

Sample Info.

Sample Chromatogram



Name	RT	Resp.	ISTD Resp.	Final Conc.
THC	2.819	6900	107914	9.7287 ng/ml
THC-COOH	2.585	177169	263812	50.6980 ng/ml
THC-OH	2.491	113646	935383	10.3247 ng/ml

\$

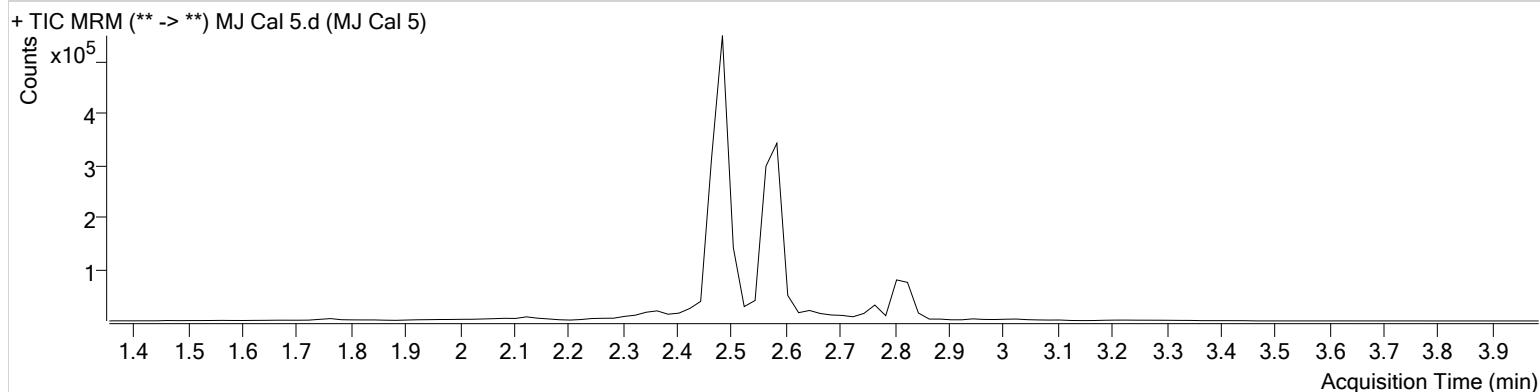
AM #26 Cannabinoids Screen Results

Batch results D:\MassHunter\Data\2019\AM 25-26\102219 AM 25 26 SP\QuantResults\THCS.batch.bin
Calibration Last Update 10/23/2019 8:24:09 AM

Instrument	69679	Data File	MJ Cal 5.d
Type	Cal	Sample	MJ Cal 5
Acq. Method	am 26 test.m	Operator	
Sample Position	P3-E1	Comment	
Injection Volume	10		
Acq. Date-Time	10/22/2019 4:18:40 PM		

Sample Info.

Sample Chromatogram



Name	RT	Resp.	ISTD Resp.	Final Conc.
THC	2.839	47845	128086	55.4937 ng/ml
THC-COOH	2.585	230043	233805	74.4872 ng/ml
THC-OH	2.491	245222	904570	23.4873 ng/ml

\$

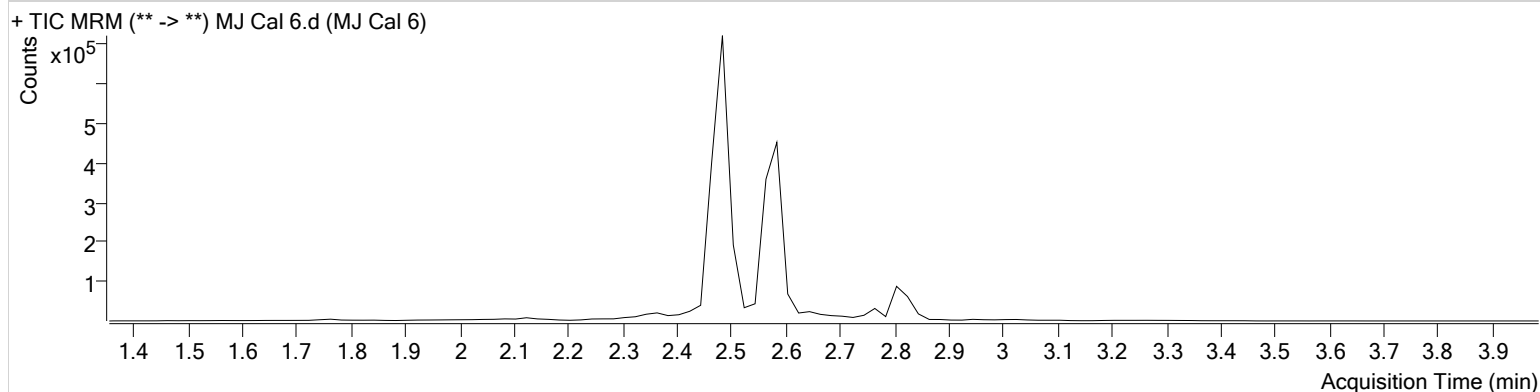
AM #26 Cannabinoids Screen Results

Batch results D:\MassHunter\Data\2019\AM 25-26\102219 AM 25 26 SP\QuantResults\THCS.batch.bin
Calibration Last Update 10/23/2019 8:24:09 AM

Instrument	69679	Data File	MJ Cal 6.d
Type	Cal	Sample	MJ Cal 6
Acq. Method	am 26 test.m	Operator	
Sample Position	P3-F1	Comment	
Injection Volume	10		
Acq. Date-Time	10/22/2019 4:25:12 PM		

Sample Info.

Sample Chromatogram



Name	RT	Resp.	ISTD Resp.	Final Conc.
THC	2.819	41065	121346	50.3013 ng/ml
THC-COOH	2.585	320210	237307	102.3204 ng/ml
THC-OH	2.491	527520	947094	48.6426 ng/ml

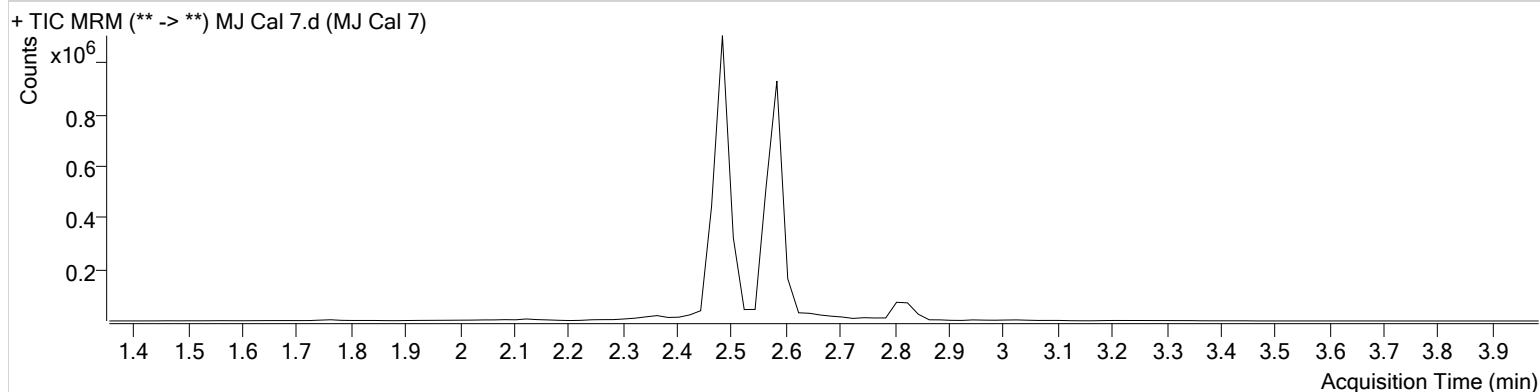
AM #26 Cannabinoids Screen Results

Batch results D:\MassHunter\Data\2019\AM 25-26\102219 AM 25 26 SP\QuantResults\THCS.batch.bin
Calibration Last Update 10/23/2019 8:24:09 AM

Instrument	69679	Data File	MJ Cal 7.d
Type	Cal	Sample	MJ Cal 7
Acq. Method	am 26 test.m	Operator	
Sample Position	P3-G1	Comment	
Injection Volume	10		
Acq. Date-Time	10/22/2019 4:31:45 PM		

Sample Info.

Sample Chromatogram



Name	RT	Resp.	ISTD Resp.	Final Conc.
THC	2.819	57552	85172	100.1612 ng/ml
THC-COOH	2.585	681690	200863	258.0354 ng/ml
THC-OH	2.491	1126809	970476	101.7962 ng/ml